
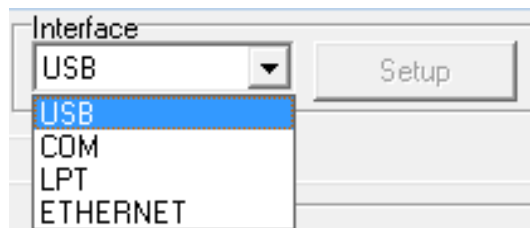


Setting Ethernet by Configuration Utility

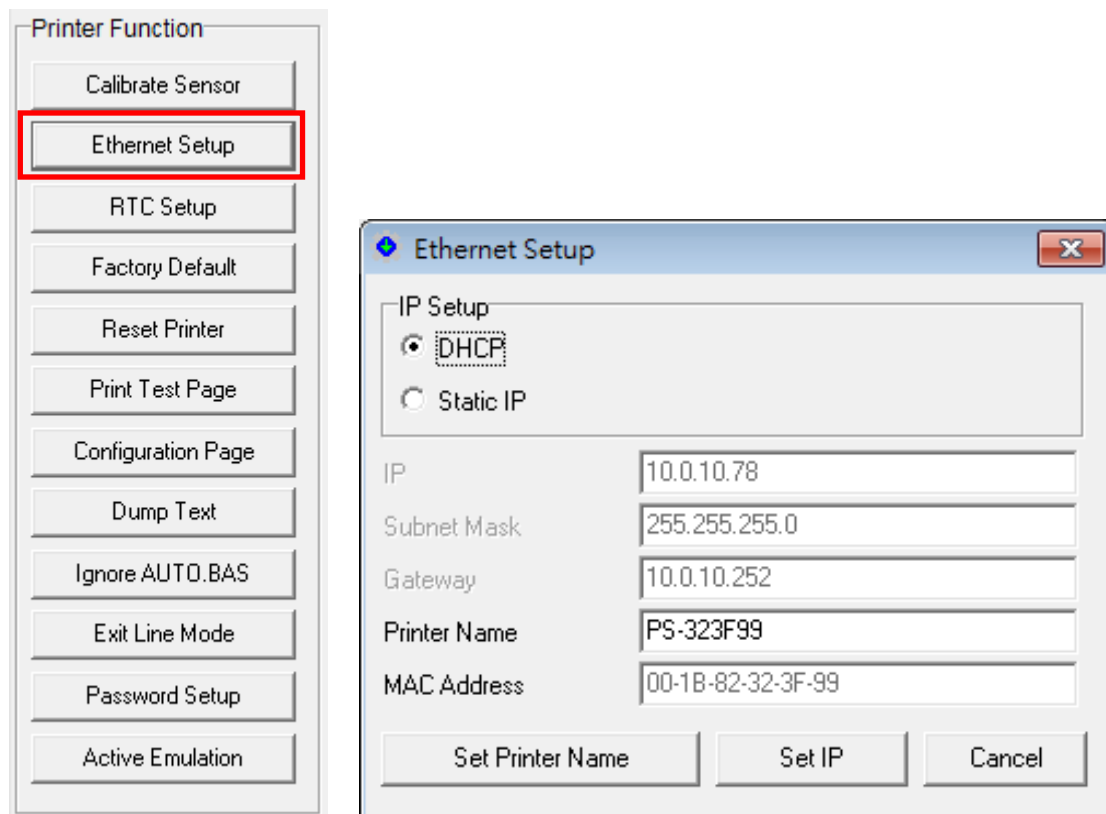
The Configuration Utility is enclosed in the CD disk \Config_Utility directory. Users can setup the Ethernet by using RS-232, USB and Ethernet interfaces. The following steps instruct users on configuring the Ethernet interface.

1. Using USB interface to setup Ethernet interface


- (1) Connect the USB cable between the computer and the printer.
- (2) Turn on the printer power.
- (3) Start the Configuration Utility by double clicking on the  icon.
- (4) The Configuration Utility is default to USB interface. If USB interface is already connected to the printer, no other settings need to be changed in the interface field.

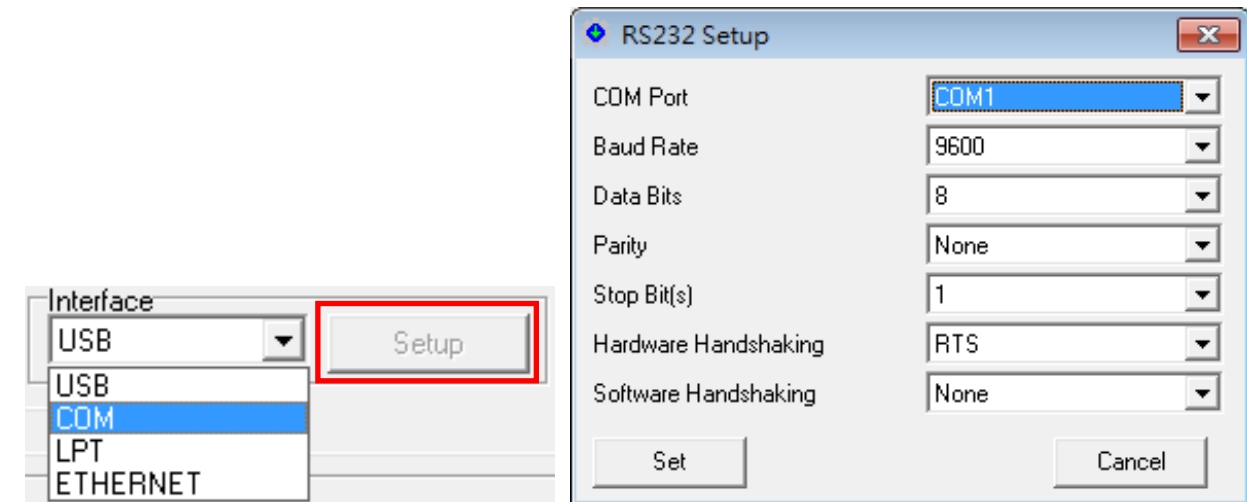


- (5) Click on the "Ethernet Setup" button from "Printer Function" group in Printer Configuration tab to setup the IP address, subnet mask and gateway for the printer Ethernet.

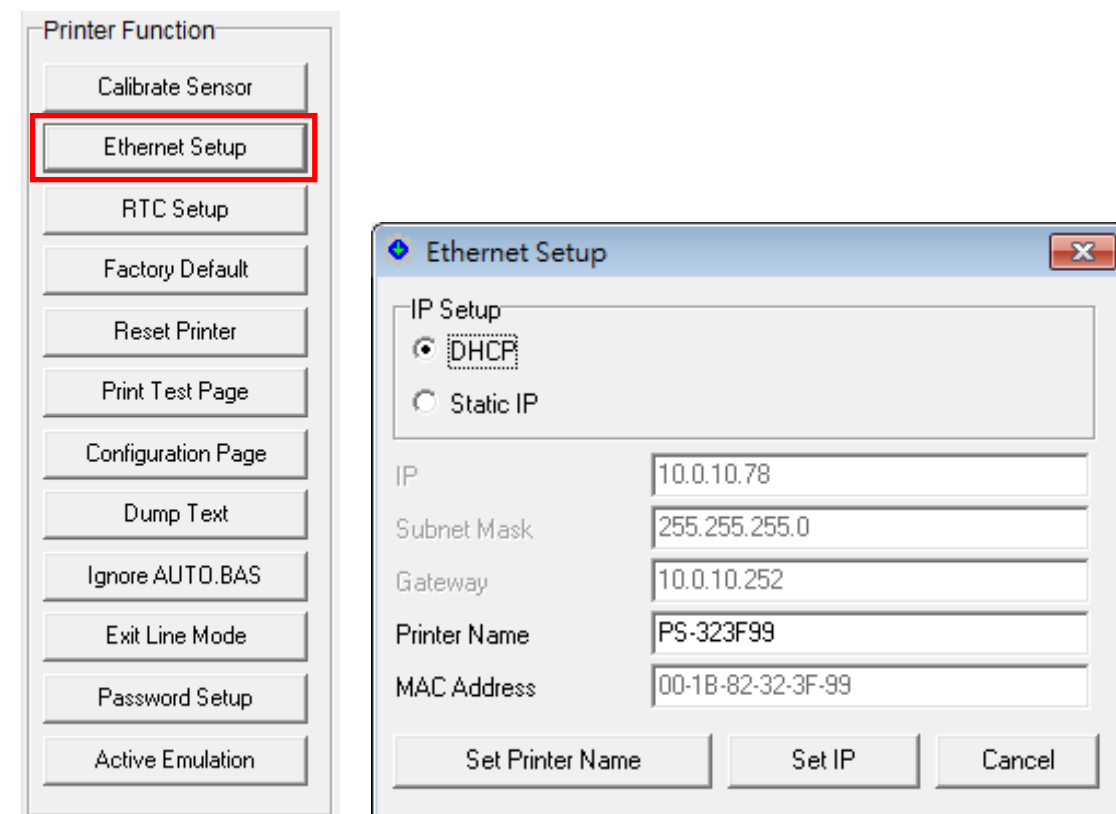


2. Using RS-232 interface to setup Ethernet interface


- (1) Connect the computer and the printer with a RS-232 cable.
- (2) Turn on the printer power.
- (3) Start the Configuration Utility by double clicking on the  icon.
- (4) Select "COM" as interface then click on the "Setup" button to setup the serial port baud rate, parity check, data bits, stop bit and flow control parameters.

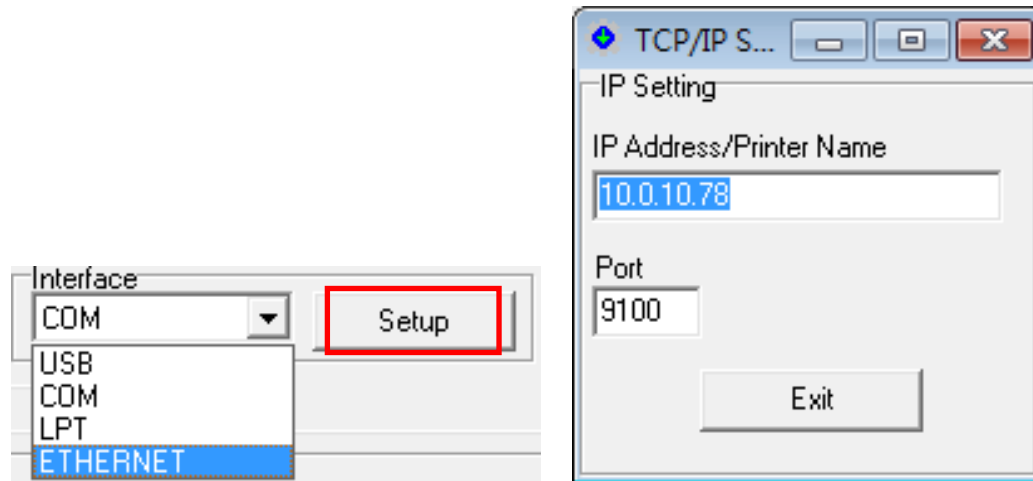


- (5) Click on the "Ethernet Setup" button from printer function of Printer Configuration tab to setup the IP address, subnet mask and the gateway for the printer Ethernet.

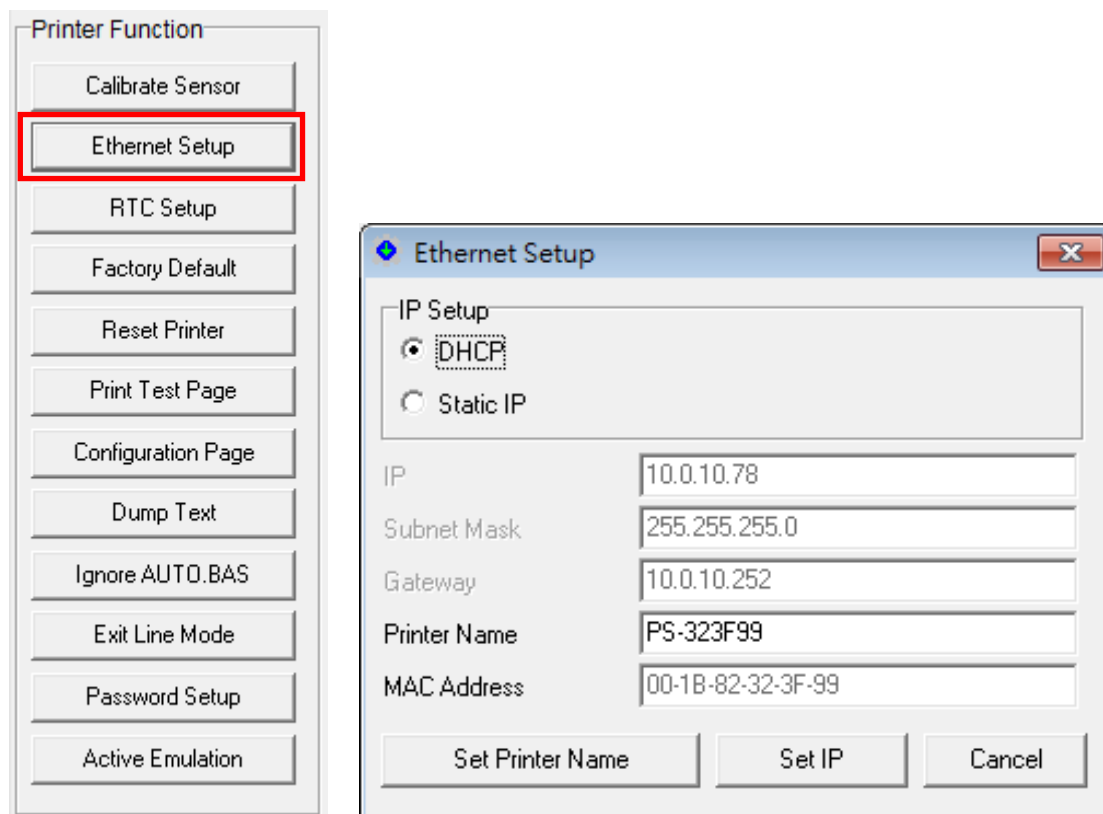


3. Using Ethernet interface to setup Ethernet interface

- (1) Connect the computer and the printer to the LAN.
- (2) Turn on the printer power.
- (3) Start the Configuration Utility by double clicking on the  icon.
- (4) Select "Ethernet" as the interface then click on the "Setup" button to setup the IP address and port for the current printer's Ethernet. Click "Exit" button to exit the Ethernet interface setup and go back to Configuration Utility main screen.



- (5) Click on the "Ethernet Setup" button from printer function of Printer Configuration tab to configure the IP address to be either using DHCP or static.



A printer's IP address is assigned by DHCP server. To change the setting to static IP address, click "Static IP" radio button then enter the IP address, subnet mask and gateway. Click "Set IP" for the settings to take effect.

Users can also change the "Printer Name" by entering the new name in the box, then click "Set Printer Name" for the change to take effect.

Note: After clicking the "Set Printer Name" or "Set IP" button, printer will reset in order for the new setting to take effect.